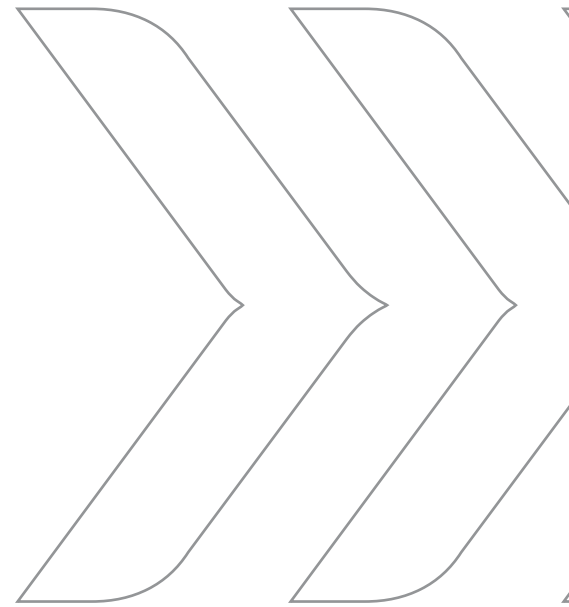


SECURESPACE INSTYLE

Locking Solutions



Innovative by DNA

With over 2 decades of expertise in crafting high-quality lifestyle solutions, aks strives to make day-to-day life better with our innovative and smart product range. Our locking solutions are specially crafted to deliver uncompromising security for all your avenues by combining new age aesthetics with state-of-the-art technology. We understand that people value security above all, that's why we ensure that trust, reliability and strength are at the core of all our locking security products.

From Padlocks, RIM Locks, Lever Handles, Multipurpose Locks to other reliable locking systems, aks brings you ultimate locking solutions that cater to your every need. Since 'Change' is our motto, we are determined to launch into manufacturing high-end electronic and Cloud based locks very soon.



Explore the **DOORS** of Destiny



Our **Vision**

To make life better by crafting innovative and smart solutions.

Our **Mission**

To create a diverse range of smartly-designed and smoothly-functional solutions of high quality for our consumers.

*Customer
Satisfaction*

High Quality

*Diverse Product
Range*

Smart Designs

LOCKING SOLUTIONS

EXPLORING INFRASTRUCTURE

And to churn out those fascinating products, we've full-fledged in-house machines like no other. Fully equipped to develop our products. Our modern-day marvels range from CNC machine, Laser cutting machine, Hydraulic presses, Power presses, Welding house, Plating plant, Polish plant to Automatic packaging. Additionally, we have a state-of-the-art die and mould manufacturing unit to make premium products with great precision and high-quality. Truly, our machines are ENGINEERED TO EXCEL.

All our Locking products undergo rigorous testing to ensure premium quality and high-grade functionality. We source all our raw material from the best suppliers in the industry so our Locking Solutions are manufactured to deliver absolute security.





Outstanding Technology

Our manufacturing processes bear the highest markers of quality and performance.

OUR ORIGINS

Spanning over 2 decades, our journey is a combination of sheer strength and will to evolve. We are determined to never stop.



1980

Shri MS Jain manually started SS sheet production in Wazirpur Industrial Area.

1996

Set up in house production of stainless steel sheets under single roof.

2005

Expanded in Shahbad Daulatpur village with around 2000 sq. mt area and 200 employees.

2007

Started manufacturing screws.

2003

AKS got registered.

2001

Expanded from 6 employees to 100 employees. Launched new product line - "Door and window fittings" with tower bolts and al-drops.

1998

Mr. Naveen Jain incorporated the company as "Steel Paradise INDIA Pvt. Ltd." Also, started hinges production with only 650 sq. mt. area.





2011

Manufactured sash lock completely in SS304 first time in India.

2017

Started electroplating by introducing complete range of brass antique products.

2016

Launched quality SS304 Investment casted Mortise Handle.

2014

Expanded production in Bawana in 8000 sq. meter area, employees strength increased to 600. started "Mortise handle made in one piece stainless steel" with unique designs.

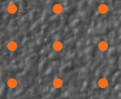
2018

Made a new vertical of "Locking solutions" by launching multipurpose locks & rim locks

2020 →

Continued expansion in "Locking Solutions" by launching special series of "Matt finished products".





Our zeal to deliver
High Quality, keeping in mind the
economics has garnered us



> **20+**

Years of Invaluable
Experience

> **600+**

Dedicated Workforce

> **2000+**

Satisfied Dealer Network

> **3000+**

High-Quality Products



LOCKING SOLUTIONS

INDEX

10-29	Lever Handle
30-33	Euro Profile Cylinders
34-40	Lock Bodies
41-46	Multipurpose Lock
47-50	Night Latch

100% sure of
Protection

Finish Code:-

- › SL Satin Lacquered
- › MSL Matt Satin Lacquered
- › AB Antique Brass
- › MAB Matt Antique Brass
- › AC Antique Copper
- › MAC Matt Antique Copper
- › BAB Black Antique Brass
- › MB Matt Black
- › P.GD Polished Gold
- › SBGD Scotch Bright Gold
- › RG Rose Gold
- › SBRG Scotch Bright Rose Gold

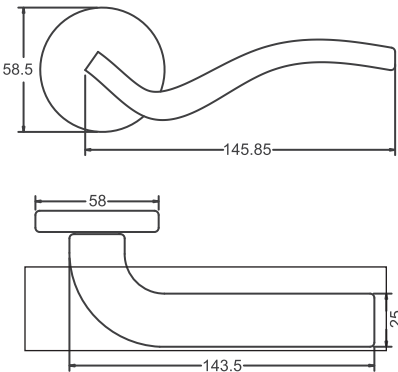




LEVER HANDLE

Quanto >

As the 'S' curve shape that transforms into an object of our daily needs. This design celebrates the beauty of nicely carved and sculpted body forms in surroundings around.



MSL



MB



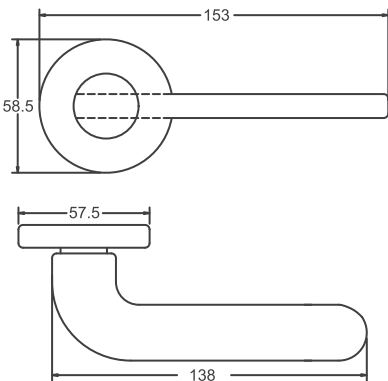
MAB



P.RG

Golf >

Modern exterior and interior door handle. It gives you a great look to your home, office etc.



MSL



MB



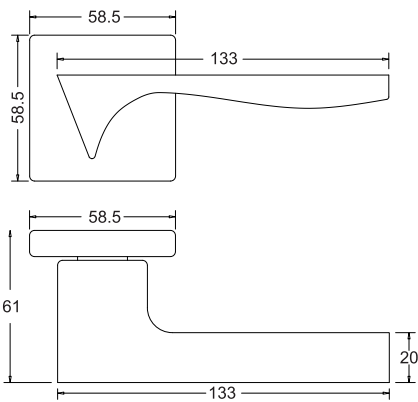
AB



P.RG

Safari >

Modern design & comes with high grade handle ensures better strength and durability and superior finish.



MSL



MB



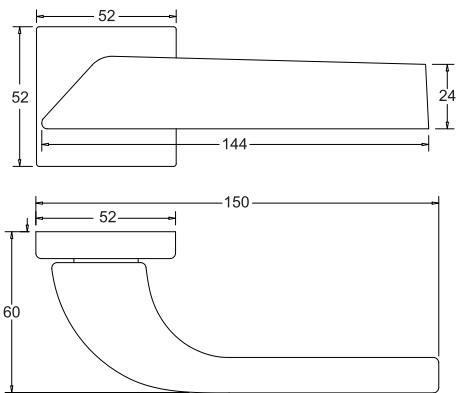
AB



P.RG

Pyramid >

Aesthetic design & excellent finishing. Stylish mortise door handle.



SL



MB



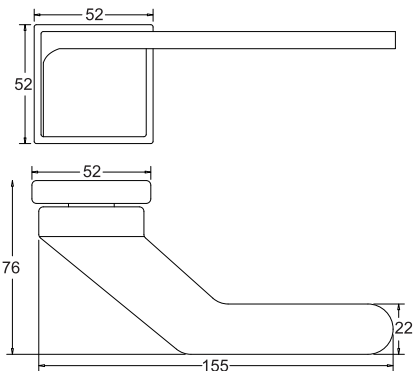
AB



SBGD

Marco >

A clean bold straight line composition reflecting minimalist approach of contemporary design; suitable for modern-day design theme.



MSL



MB



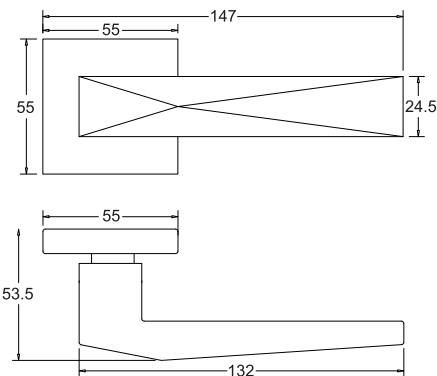
AB



P.RG

Hector >

As the quadrilateral shape shines subtly with its bold contours, it makes you appreciate beauty from a different paradigm.



MSL



MB



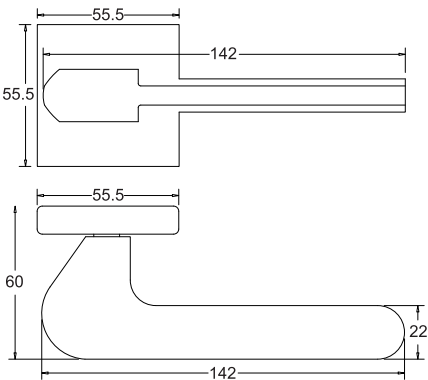
AB



SBGD

Seltos >

High grade stainless steel ensures better strength and durability with great finish.



MSL



MB



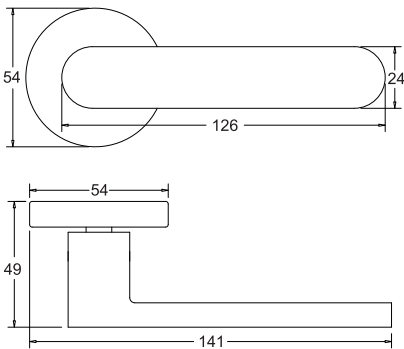
AB



P.RG

Axor >

Decorative main door handle ensures better strength and durability & better finish.



MSL



MB



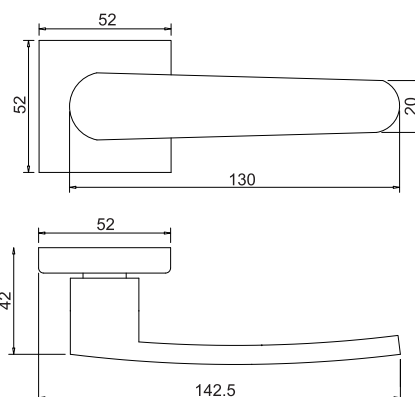
AB



P.RG

Lado >

Uniquely designed mortise door handle has aesthetic design with excellent finishing, that add a touch of elegance to any home.



MSL



MB



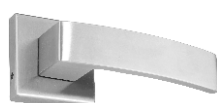
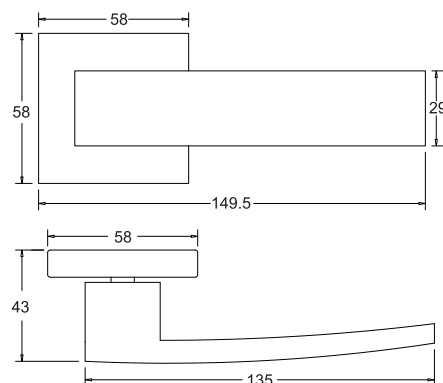
AB



P.RG

Fortuner >

Classy looks & great build quality gives smooth touch and good grip.



MSL



MB



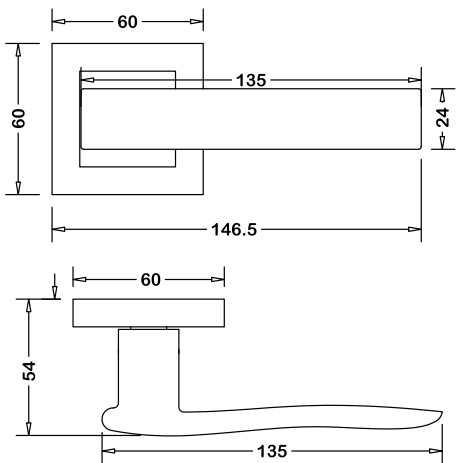
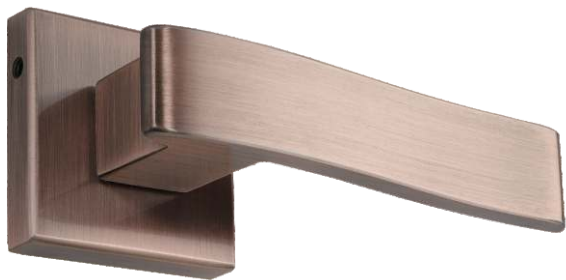
MAB



P.RG

Avila >

Aesthetic design & excellent finishing. Great build quality, nice to touch, gives a good grip.



MSL



MB



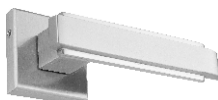
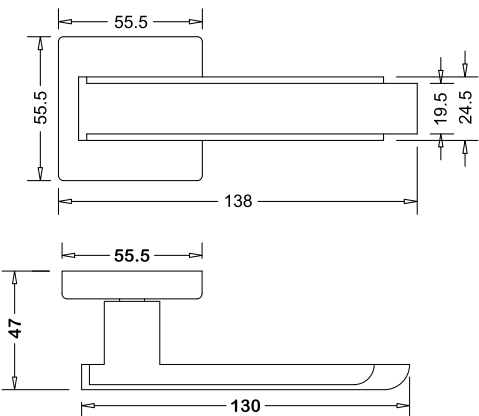
AB



AC

Amber >

Uniquely designed mortise door handle has aesthetic design with excellent finishing, that add a touch of elegance to any home.



MSL



MB



AB

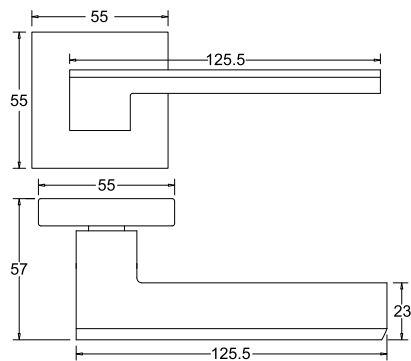


P.RG



Eagle >

The smoothest opening & closing mechanism works silently and will maintain your home/office decorum.



MSL



MB



MAB

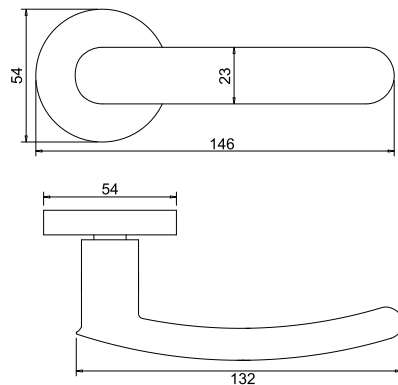


AC



Harrier >

A cornerstone, a flat minimal expression of the beauty of pure shapes. These basic forms become the backdrop for other elements to come forward retaining their identity



MSL



MB



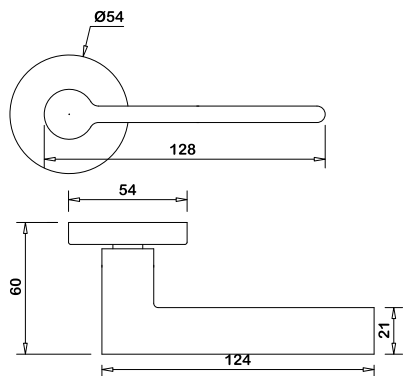
MAB



P.RG

Leva >

Uniquely designed mortise door handle has aesthetic design with excellent finishing, that add a touch of elegance to any home.



MSL



MB



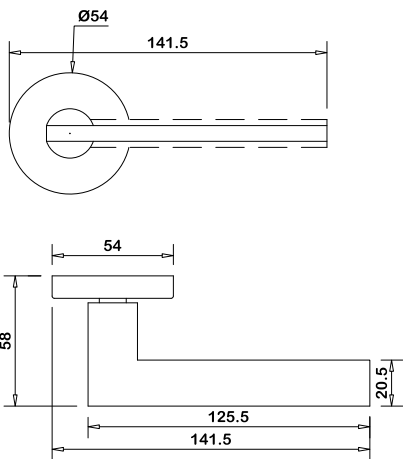
AB



SBGD

Vita >

It is a great piece to secure your home as well as to add a look of glamour to its overall appearance. Very handy one. Looks premium and elegant.



MSL



MB



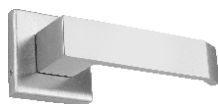
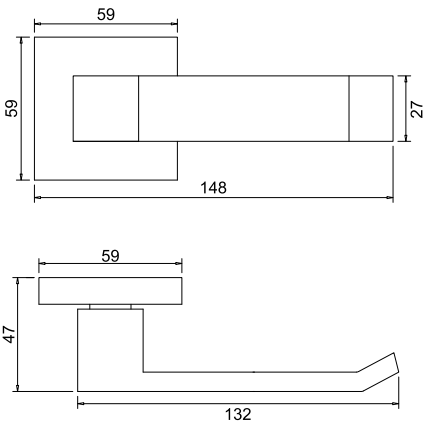
MAB



P.RG

Rio >

High grade handle ensures better strength and durability & better finish.



MSL



MB



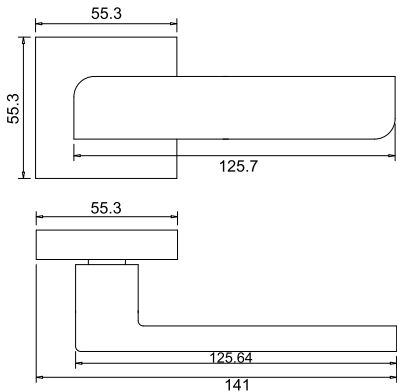
AB



P.RG

Amx >

A clean bold straight line composition reflecting minimalist approach of modern design.



MSL



MB



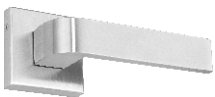
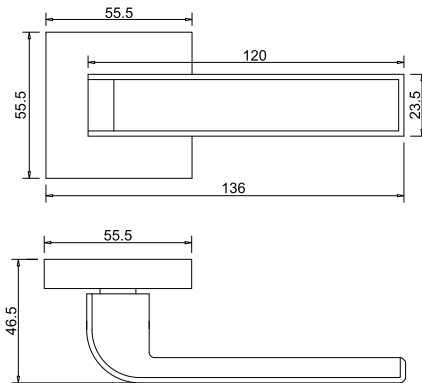
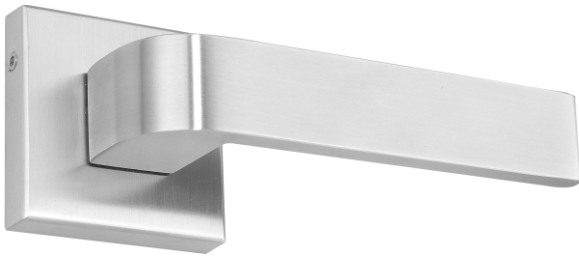
AB



AC

Ford >

A minimal art form yet it complements the boldness of the handle which is designed based on sharp age futuristic design.



MSL



MB



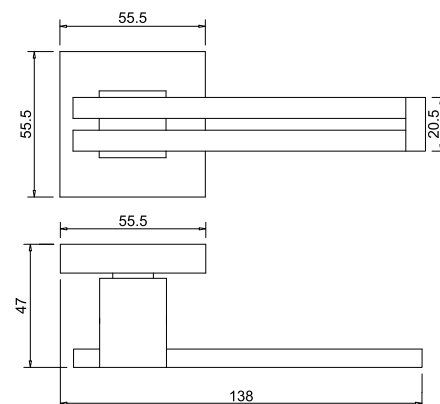
AB



AC

Thunder >

High grade handle ensures better strength and durability & better finish.



MSL



MB



AB

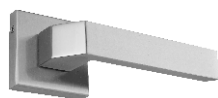
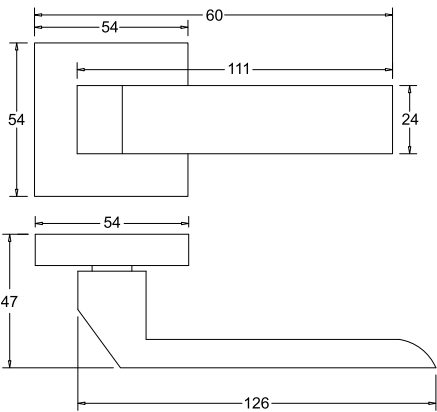


AC

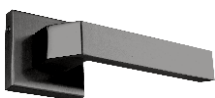


Magic >

Designed with perfection and grace, this door handle features a high quality body with a smooth finish on the exterior.



MSL



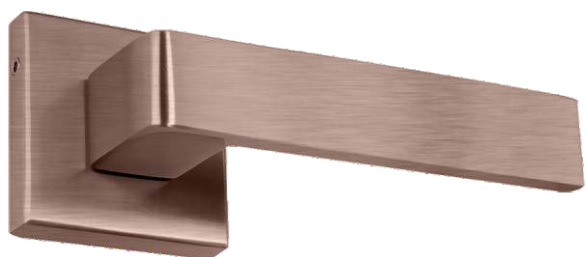
MB



AB

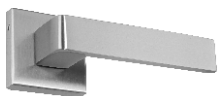
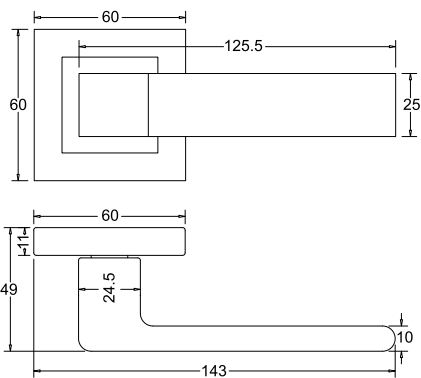


AC



Avalone >

High grade handle ensures better strength and durability & better finish.



MSL



MB



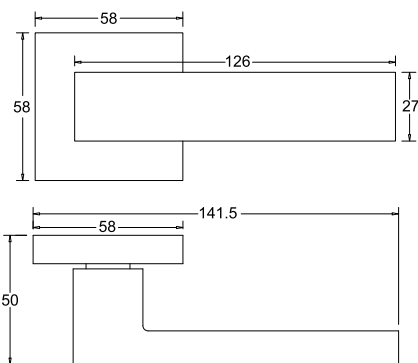
AB



AC

Pacer >

The smoothest opening & closing mechanism works silently and will maintain your home/office decorum.



MSL



MB



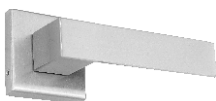
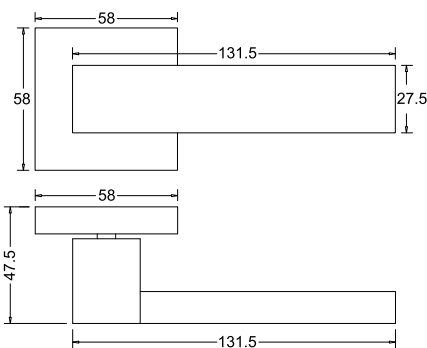
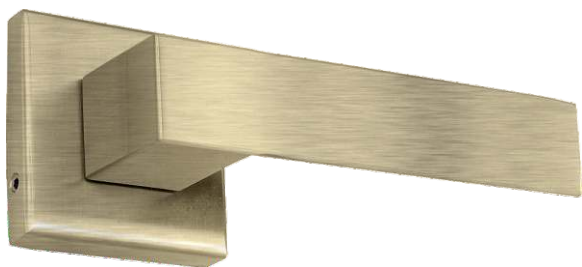
AB



AC

Decent >

Durable and stylish, sleek finish provides a pristine appearance that coordinates easily with almost any surrounding decor.



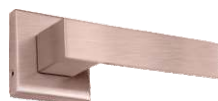
MSL



MB



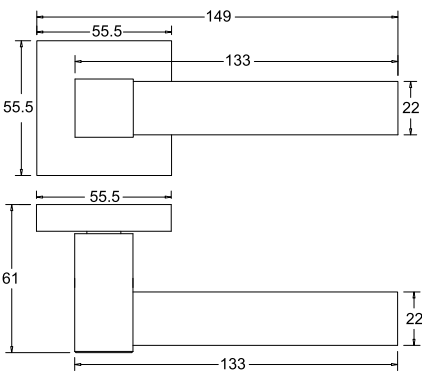
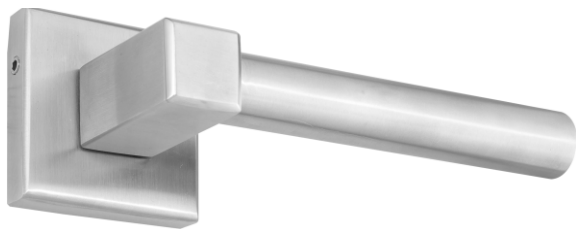
AB



AC

Etios >

Designed with perfection and grace, this door handle features a high quality body with a smooth finish.



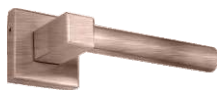
MSL



MB



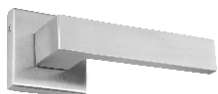
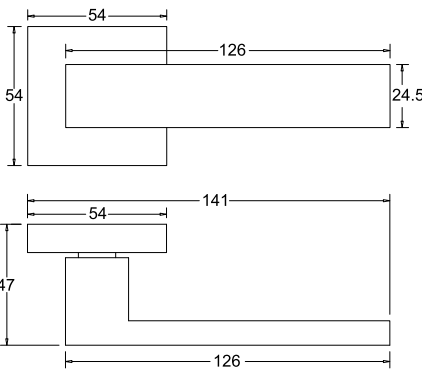
AB



AC

Aspen >

This design is made in order to provide each customer longer using life of this door handle, and ensures the handle set will not be easily broken, also the matte surface provides higher resistance to corrosion and rust.



MSL



MB



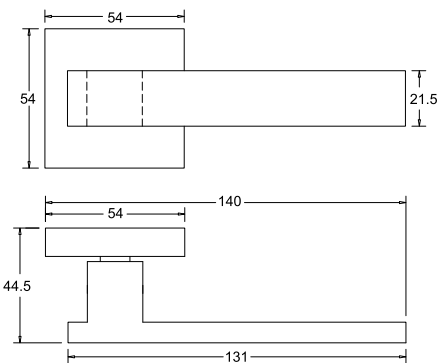
AB



AC

Accent >

Smooth corner with modern shape, can fit a variety of different home decoration styles perfectly.



MSL



MB



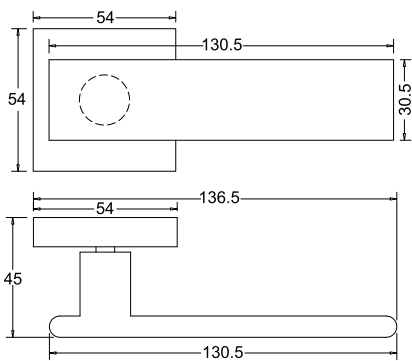
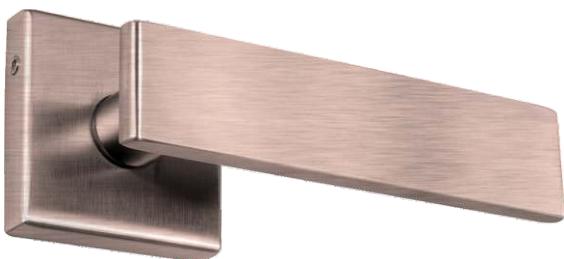
AB



AC

Edima >

Durable and stylish, sleek finish provides a pristine appearance that coordinates easily with almost any surrounding decor.



MSL



MB



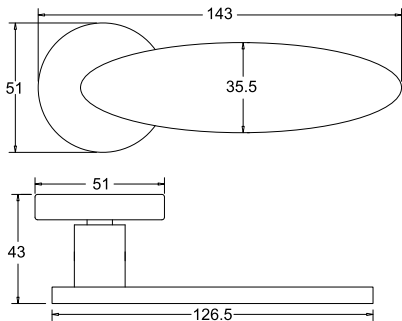
AB



AC

De-Soto >

Smooth corner with modern shape, can fit a variety of different home decoration styles perfectly.



MSL



MB



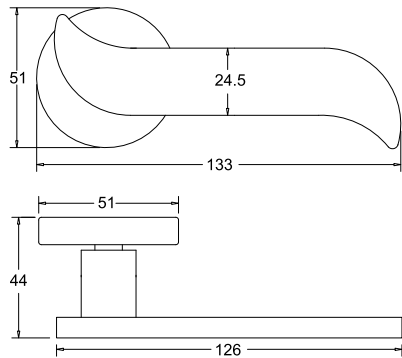
AB



AC

Hillman >

Uniquely designed mortise door handle has aesthetic design with excellent finishing, that add a touch of elegance to any home.



MSL



MB



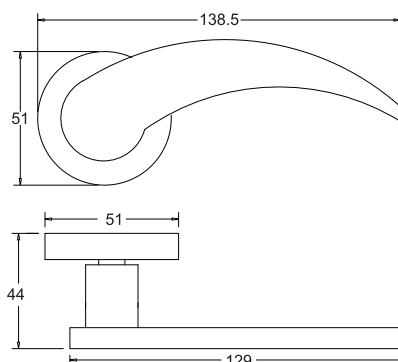
AB



AC

Costin >

Decorative main door pull handle ensures better strength and durability



MSL



MB



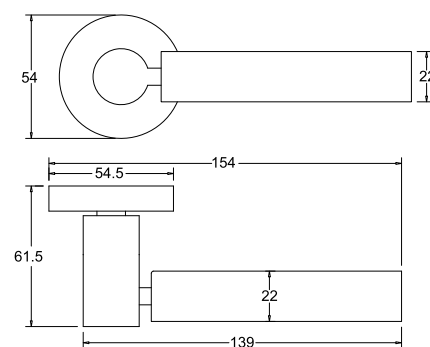
AB



AC

Gema >

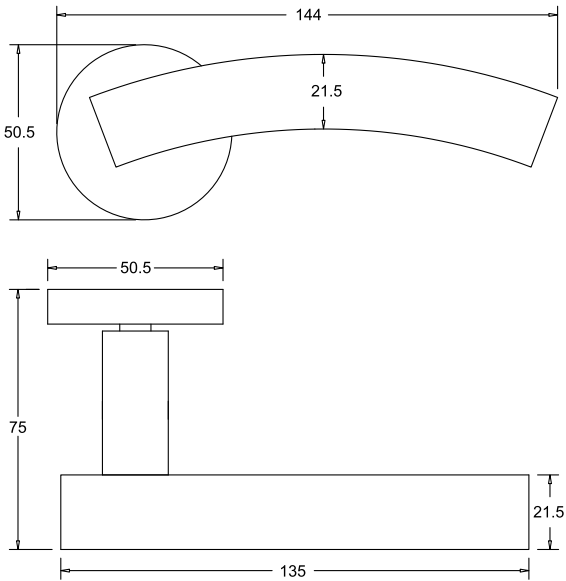
Comfortable grip, oval tube door handle is practical and convenient.





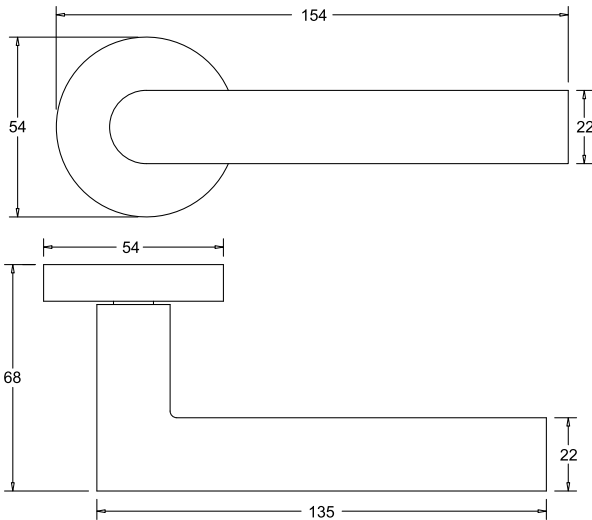
'C' Type >

'C' Curve design is made in order to provide longer life and ensures that handle set will not be easily broken, also the matte surface provides higher resistance to corrosion and rust.



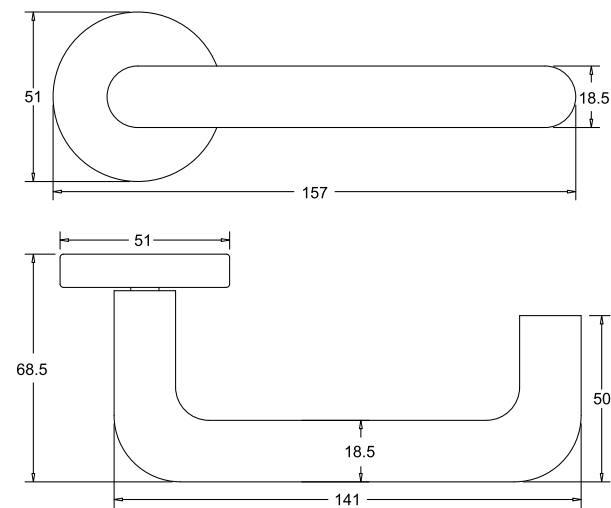
Nikon >

Oval tube door handle is practical and convenient, with reasonable design, low opening and closing noise, and does not affect daily life.



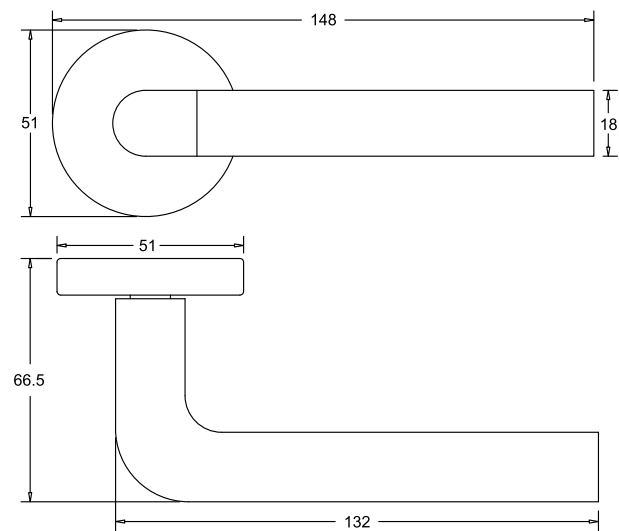
‘D’ Type >

The smoothest opening & closing mechanism works silently and will maintain your home/office decorum.



‘L’ type >

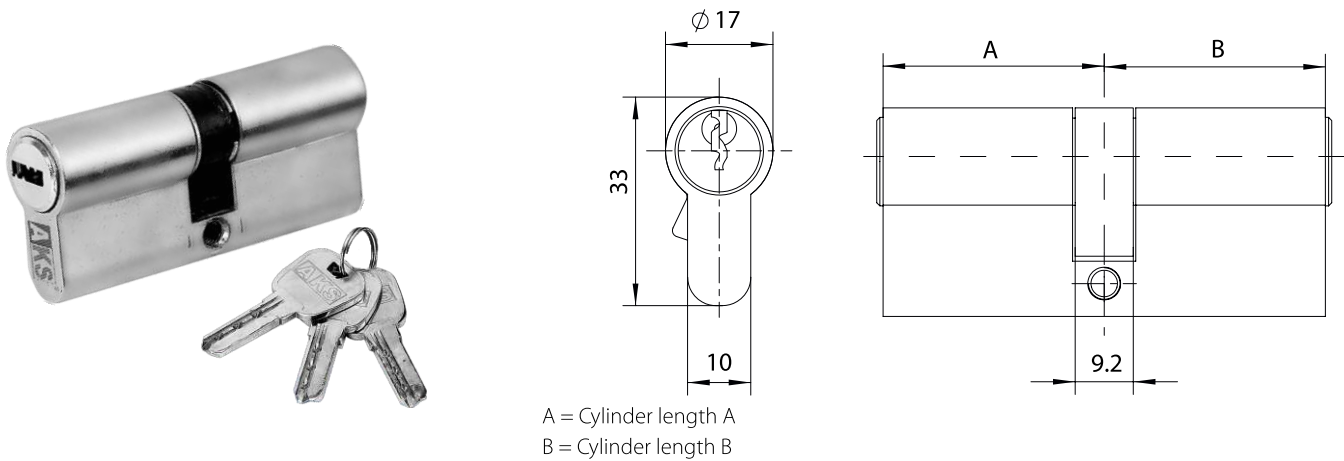
Oval tube door handle is practical and convenient, with reasonable design.





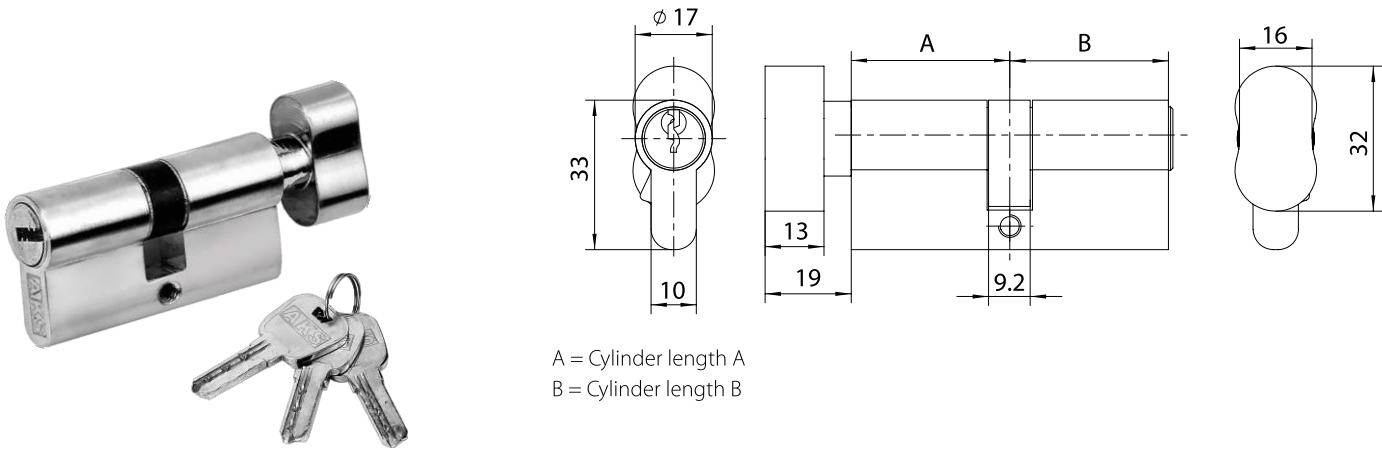
**EURO PROFILE
CYLINDERS**

Both Side Ultra Key (BSK) >



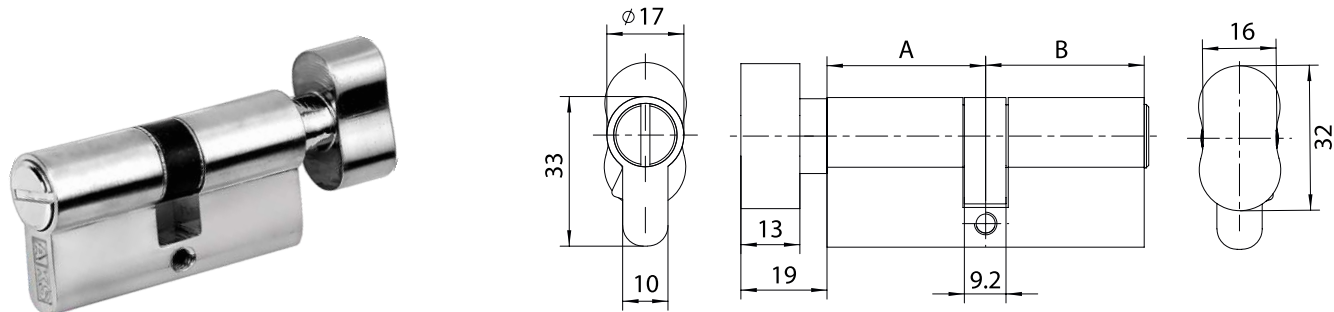
- SL  MB  AB  AC  RG 

One Side Ultra Key & One Side Knob (OSK) >



- SL  MB  AB  AC  RG 

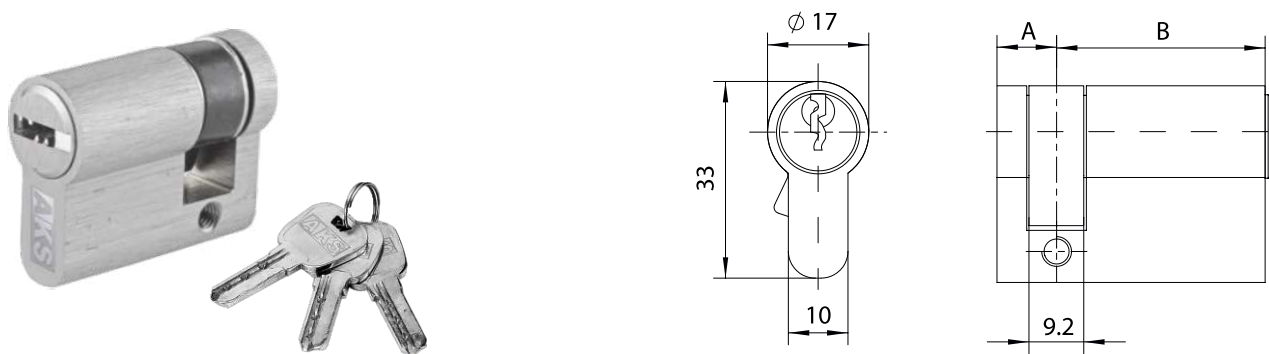
One Side Coin & One Side Knob (OSC) >



A = Cylinder length A
B = Cylinder length B

- SL 
- MB 
- AB 
- AC 
- RG 

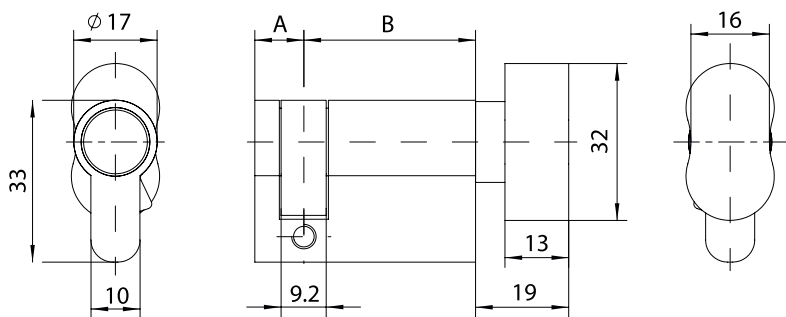
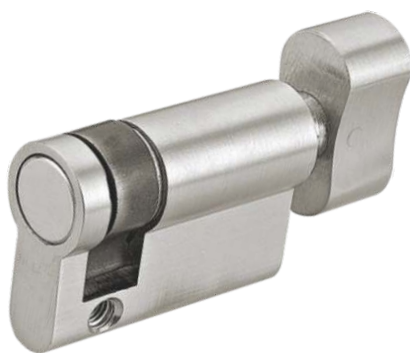
Half Cylinder with Ultra Key (HKY) >



A = Cylinder length A
B = Cylinder length B

- SL 
- MB 
- AB 
- AC 
- RG 

Half Cylinder with Knob (HKM) ➤



A = Cylinder length A
B = Cylinder length B

SL



MB



AB

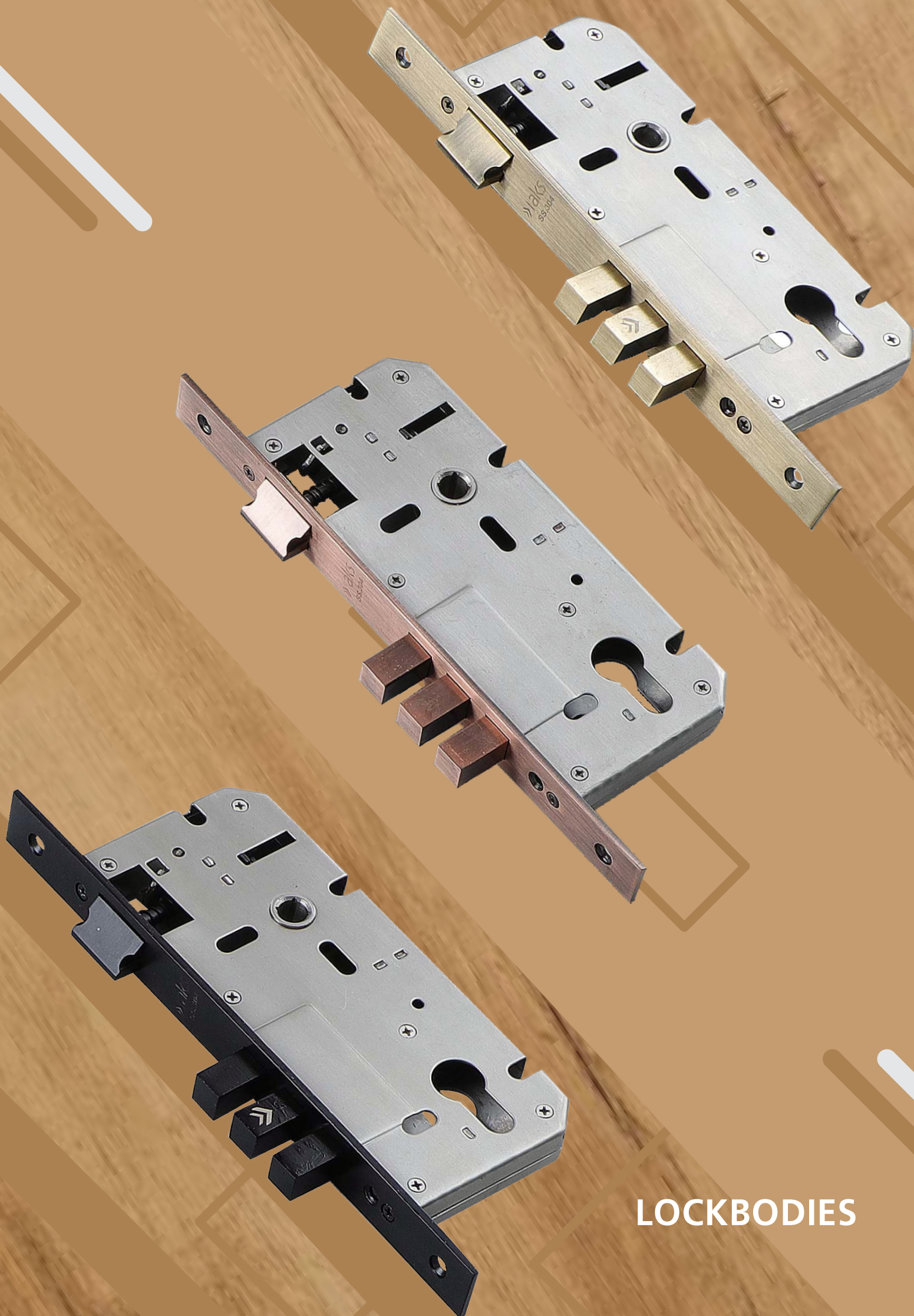


AC



RG

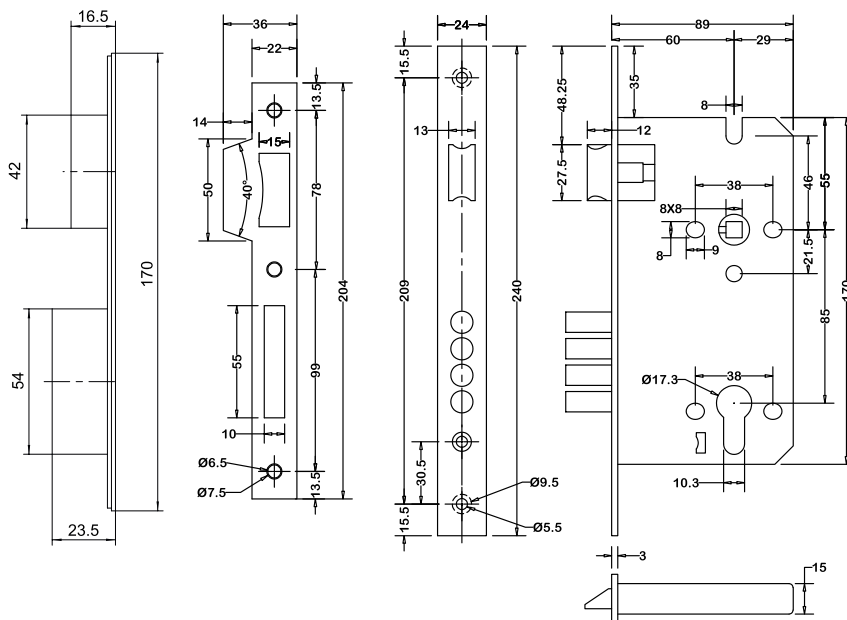
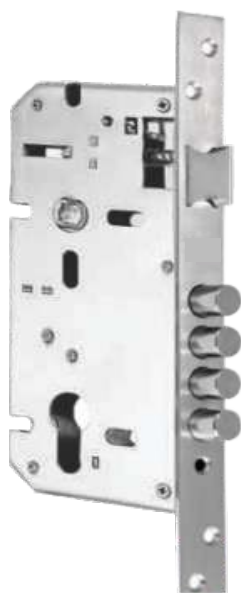




LOCKBODIES

Four Round Bolt Lock Body >

Center X Backset : 85 mm X 60 mm



MSL



MB



AB



AC

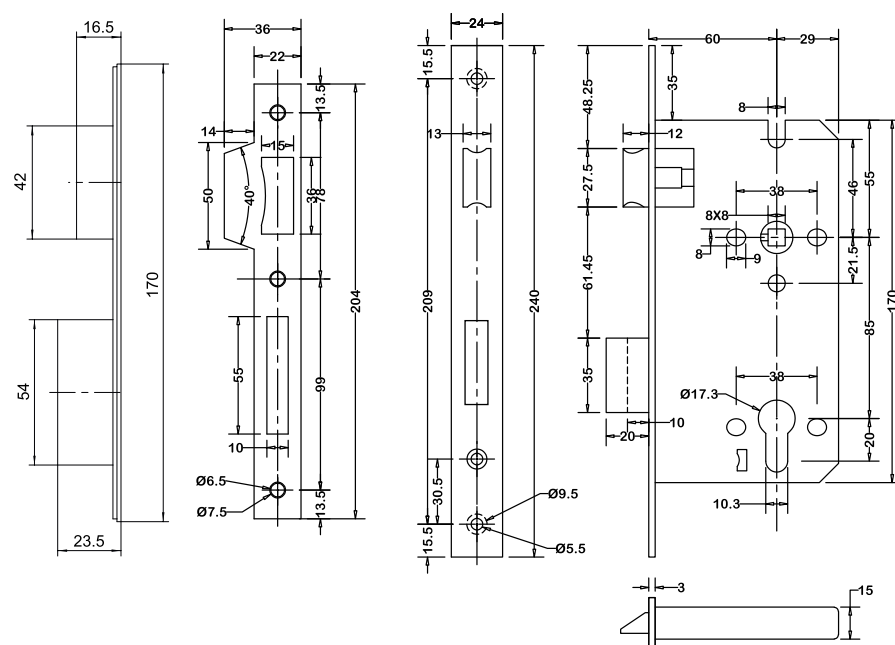


RG



Single Square Bolt Lock Body >

Center X Backset : 85 mm X 60 mm



MSL



MB



AB



AC

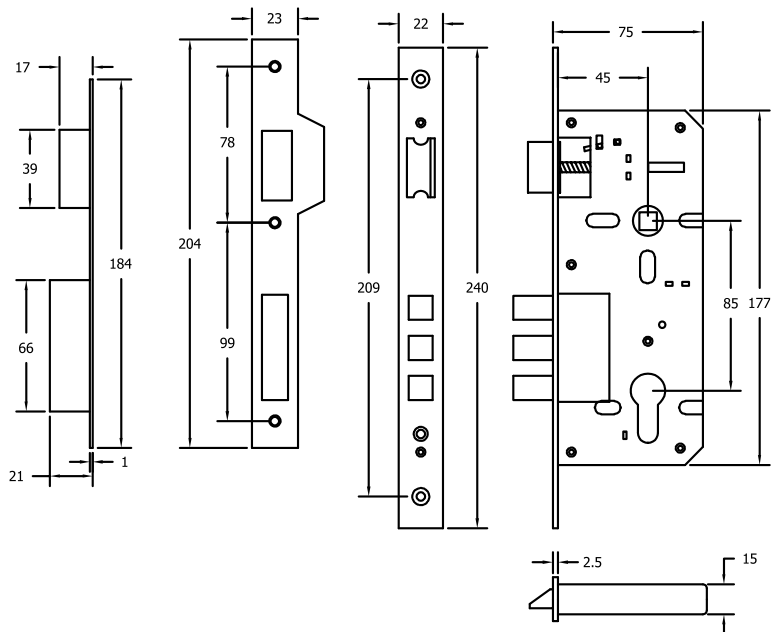


RG



Three Square Bolt Lock Body >

Center X Backset : 85 mm X 45 mm



MSL



MB



AB



AC

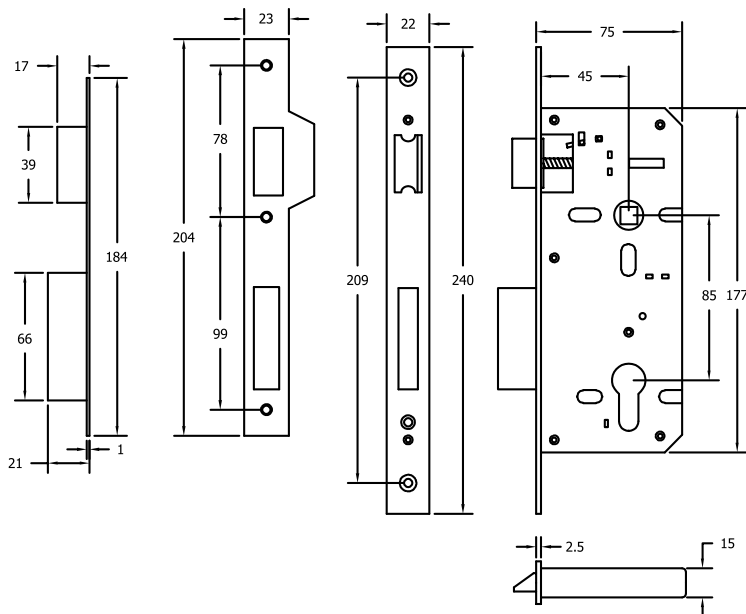


RG



Single Square Bolt Lock Body >

Center X Backset : 85 mm X 45 mm



MSL



MB



AB



AC

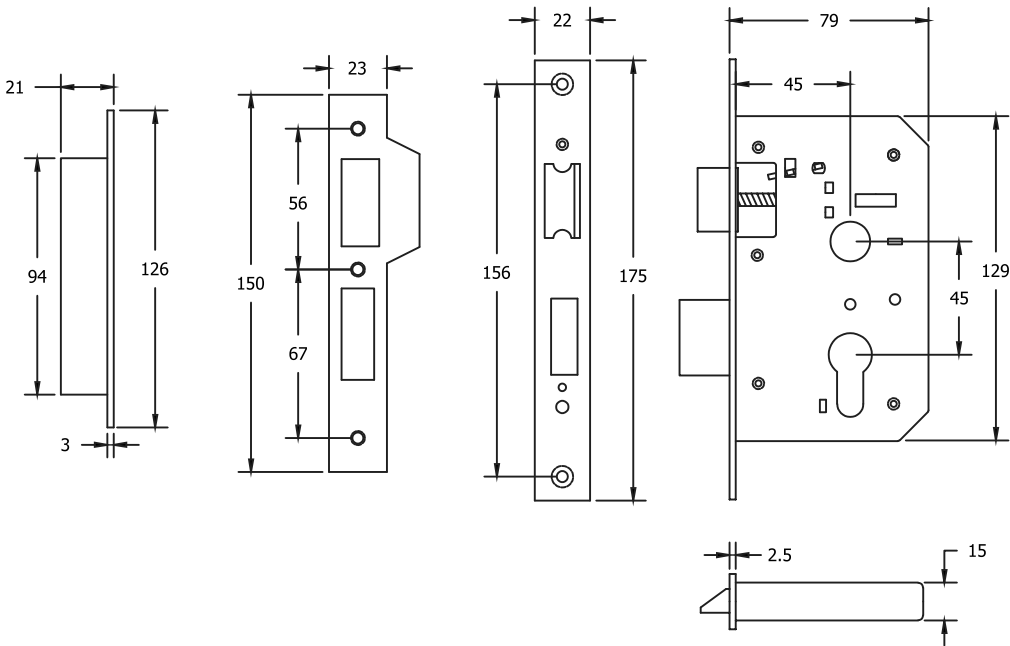


RG



Single Square Bolt Lock Body >

Center X Backset : 45 mm X 45 mm



MSL



MB



AB



AC

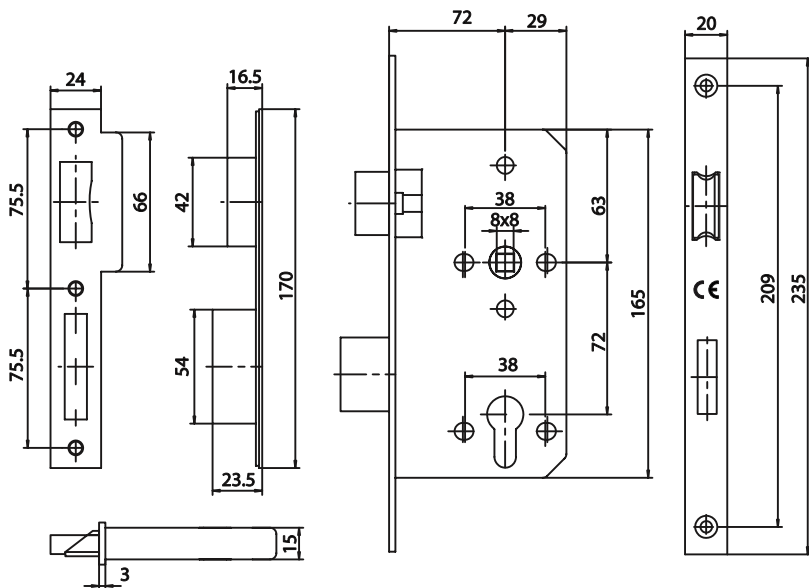


RG



Single Square Bolt Lock Body >

Center to Center : 72 mm



MSL



MB



AB



AC

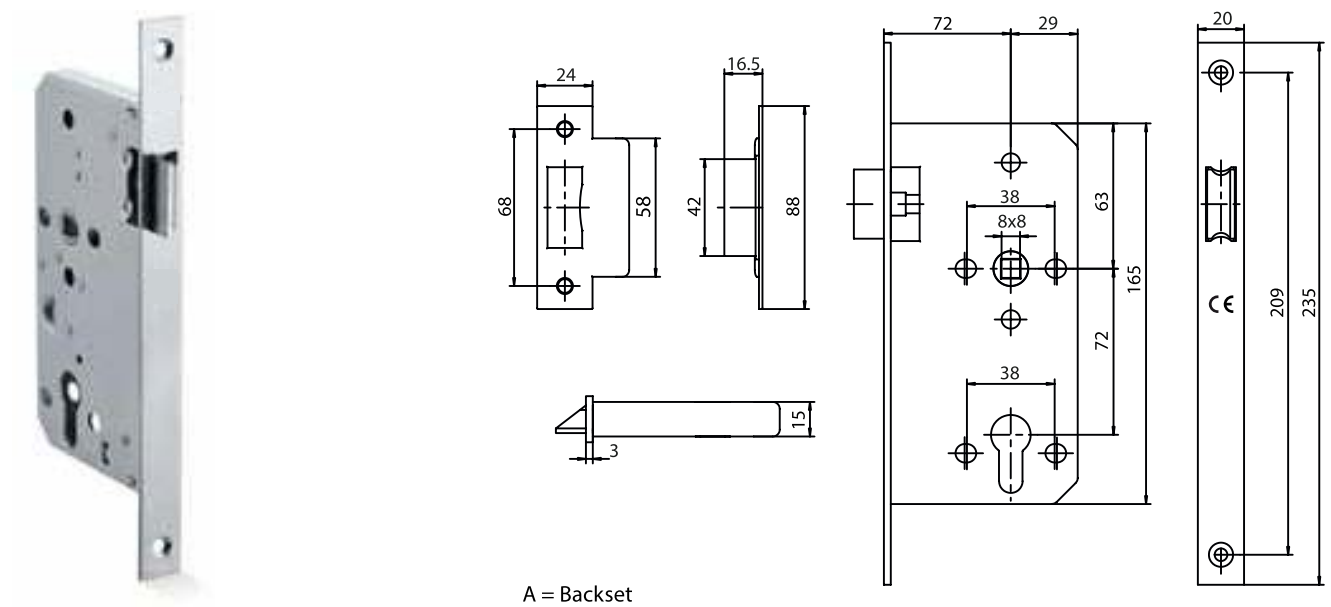


RG



Latch Door Lock >

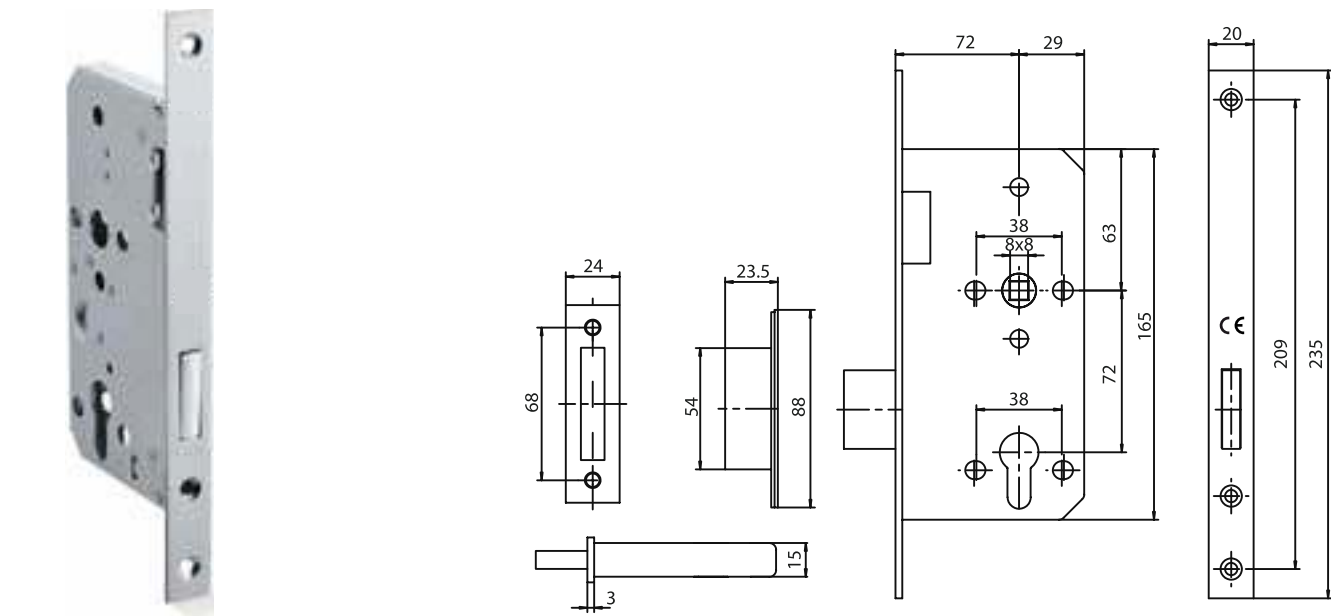
Center to Center : 72 mm



- MSL 
- MB 
- AB 
- AC 
- RG 

Dead Bolt Door Lock >

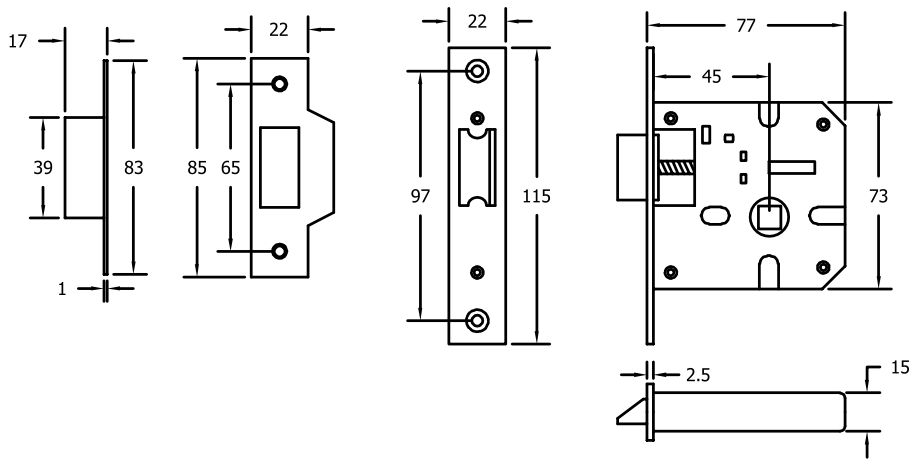
Center to Center : 72 mm



- MSL 
- MB 
- AB 
- AC 
- RG 

Latch Body >

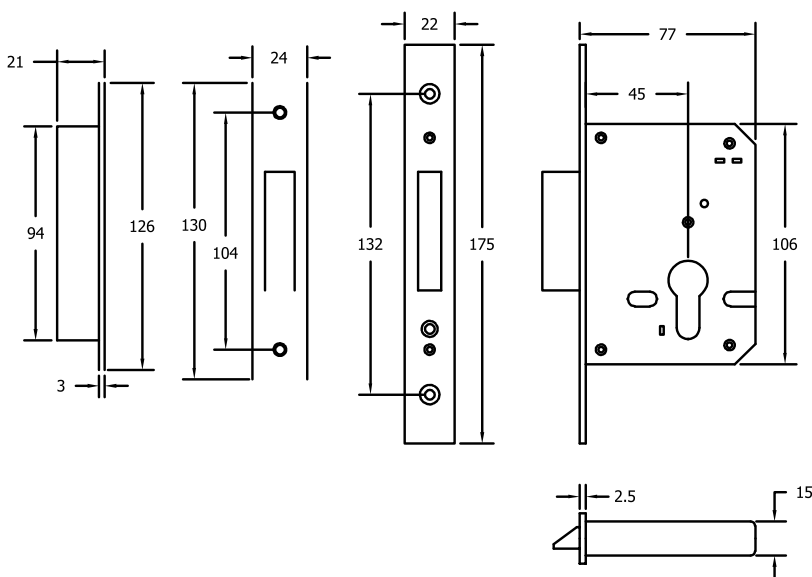
Backset : 45 mm



- MSL  MB  AB  AC  RG 

Dead Lock >

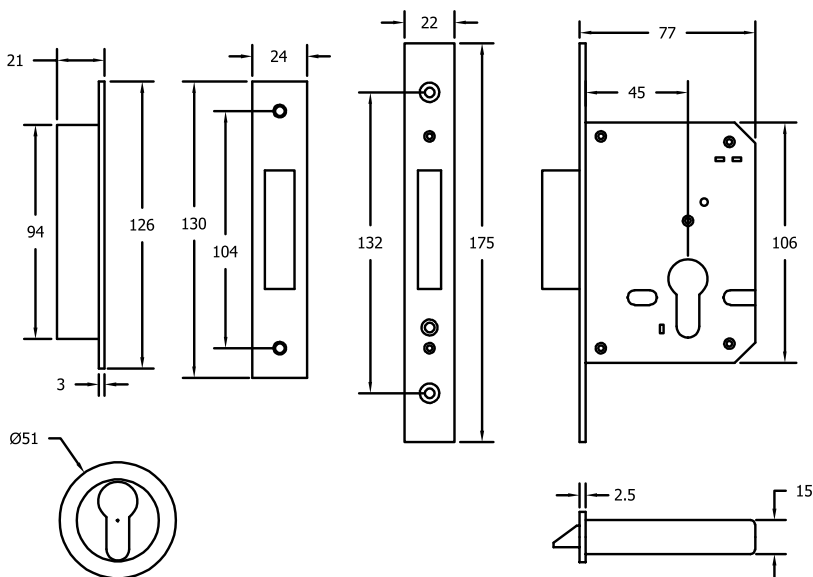
Backset : 45 mm



- MSL  MB  AB  AC  RG 

Dead Lock with Round Escutcheon ›

Backset : 45 mm



MSL 

MB 

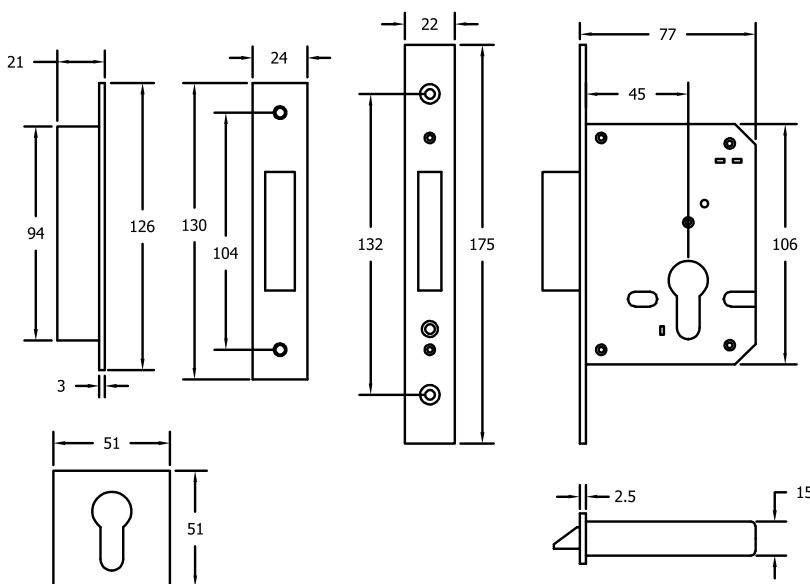
AB 

AC 

RG 

Dead Lock with Square Escutcheon ›

Backset : 45 mm



MSL 

MB 

AB 

AC 

RG 

PROTECT YOUR ASSETS

PROTECTING WHAT MATTERS
TO YOU- YOUR VALUABLES.



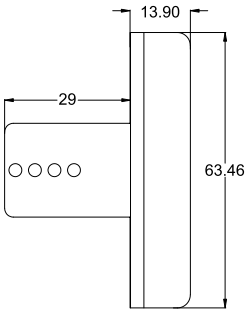
**MULTIPURPOSE
LOCKS**

Wardrobe Lock >

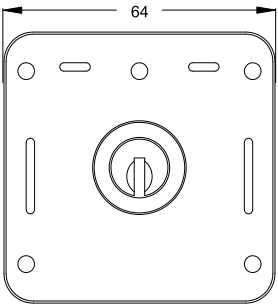


Key Features

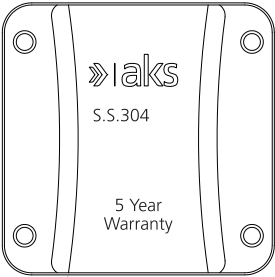
- Material : Stainless Steel (202)
- Finish : SS
- Panel thickness : 25 mm
- Dimension : 64X64mm
- Key type : Ultra Key
- No. of Key : 2 Keys



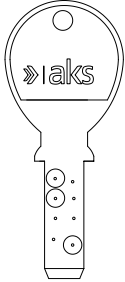
Lock side view



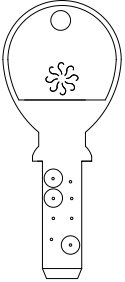
Lock front view



Lock back view



Key front view



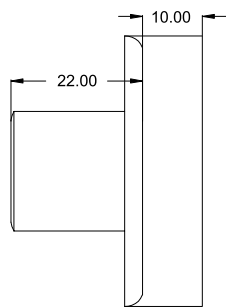
Key back view

Drawer Lock >

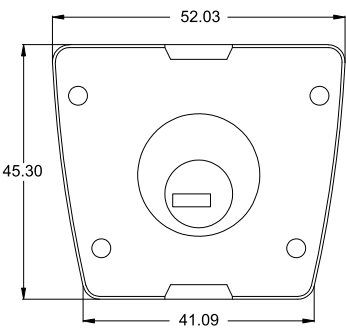


Key Features

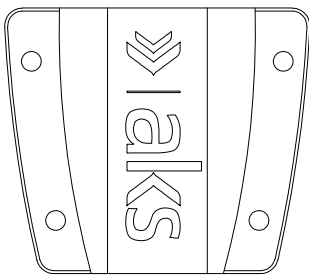
- Material : Stainless Steel (202)
- Finish : SS
- Panel thickness : 25 mm
- Dimension : 52X45mm
- Key type : Ultra Key
- No. of Key : 2 Keys



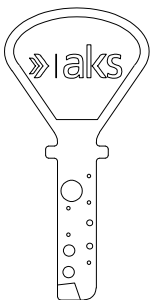
Lock side view



Lock front view



Lock back view



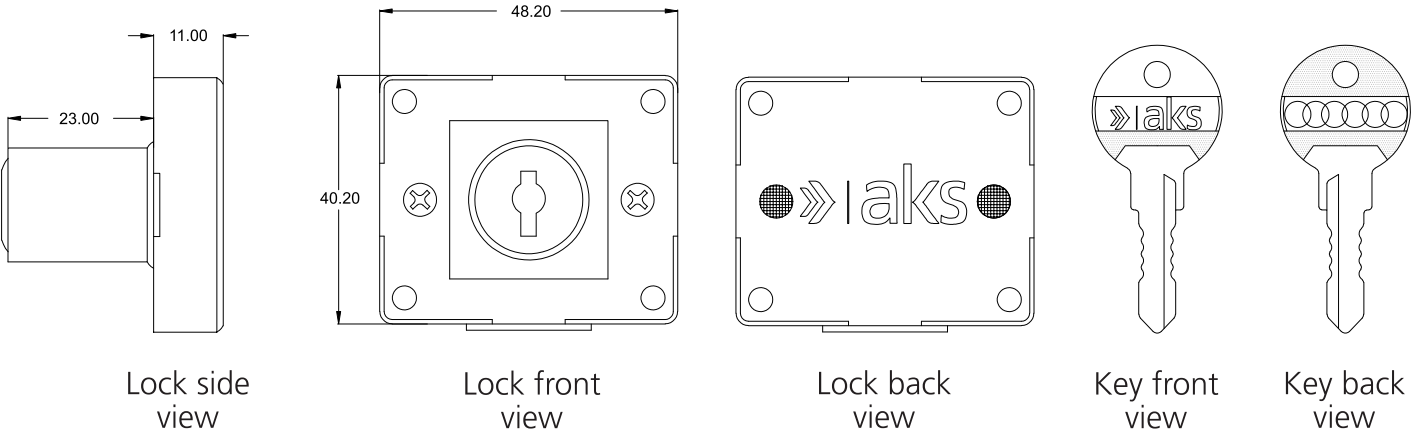
Key front view

Double Side Lock >



Key Features

- Material : Zinc
- Finish : SS
- Panel thickness : 22 mm
- Dimension : 48X40mm
- Key type : Normal Key
- No. of Key : 2 Keys

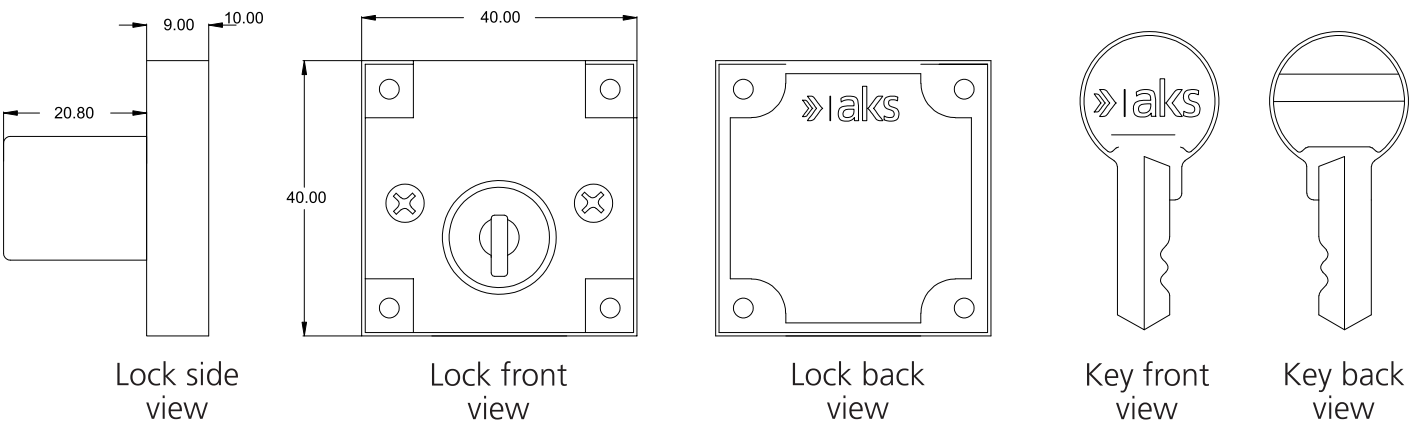


Eco Multipurpose lock >



Key Features

- Material : Zinc
- Finish : SS
- Panel thickness : 22 mm
- Dimension : 40X40mm
- Key type : Normal Key
- No. of Key : 2 Keys

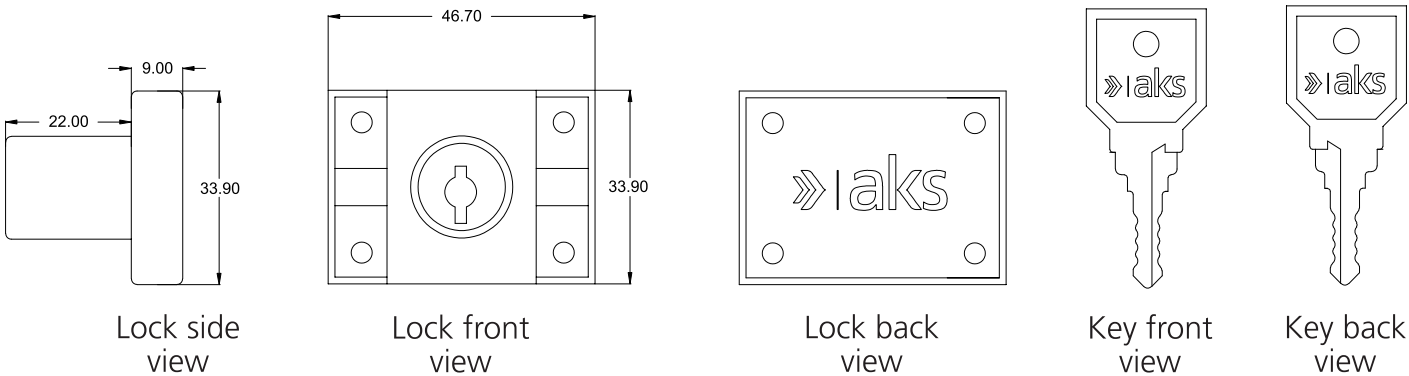


Double Side Lock >



Key Features

- Material : Zinc
- Finish : SS
- Panel thickness : 22 mm
- Dimension : 47X34mm
- Key type : Normal Key
- No. of Key : 2 Keys



SECURE YOUR DOOR

PROTECTING WHAT MATTERS
TO YOU- YOUR VALUABLES.

NIGHT LATCH



Night Latch >



Specifications

Body / Receptacle / Striker Plate : CRCA. MS. Sheet

Dead bolt Square : Zinc

Latch bolt : Brass

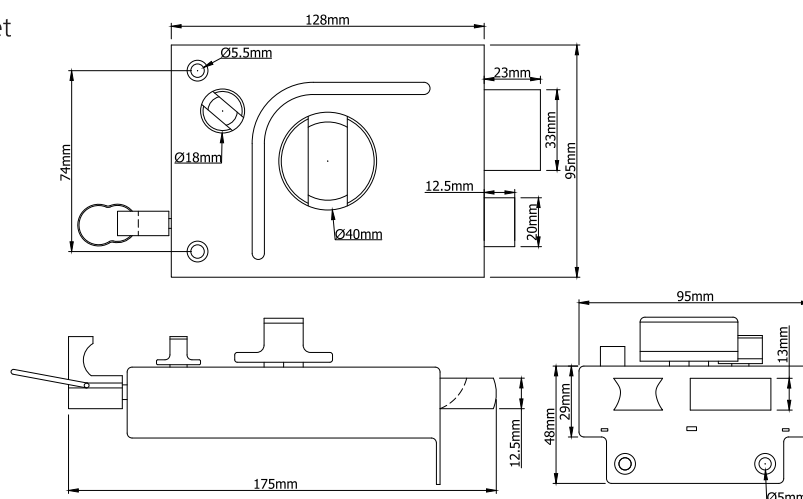
Big Knob & Small Knob: Zinc

Puller : Zinc

Finish

SPC – Silver Paint Coated .

AB – Antique Brass.



Features

- Operated by Key from outside and knob / key from inside.
- Double stroke Deadbolt with 11mm stroke each – total 22mm.
- Brass Latch bolt with Safety Clip on zinc Puller to hold back the Latch bolt to prevent accidental closing of the door.
- Turning the small knob from inside secure the latch bolt and the lock cannot be opened from outside even with its own key thus restricting the entry of unknown persons.
- Small knob function to provide Latch bolt locking function in Open / Close conditions.
- Reversible Latch Bolt makes lock suitable for both inside & outside opening doors.
- Cylinder with Precision brass lever locking mechanism.
- Rust-resistance Coated finish.
- Dimple key technology cylinder provide extra security with over 1 million combination or pin cylinder technology with 5 pin makes the lock unlikable.
- 2 lacs life cycle tested.
- Suitable for 30mm – 85mm thick doors.

Tri Bolt Latch >



Specifications

Body / Receptacle : CRCA. MS. Sheet

2 Dead bolt Round : Mild Steel

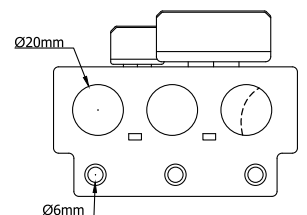
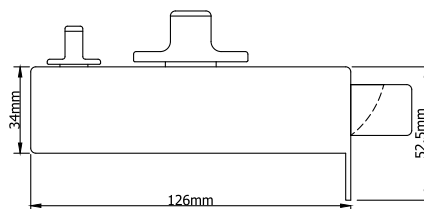
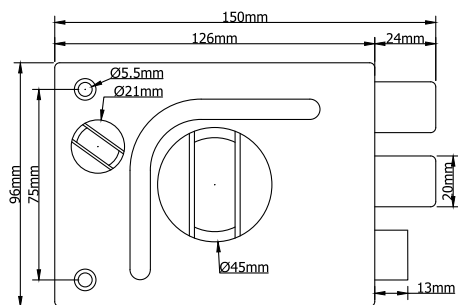
Latch bolt : Brass

Big Knob & Small Knob: Zinc

Finish

SPC – Silver Paint Coated .

AB – Antique Brass.



Features

- Operated by key from outside and knob / key from inside.
- Double stroke Deadbolt with 11mm stroke each – total 22mm.
- Turning the small knob from inside secure the latch bolt and the lock cannot be opened from outside even with its own key thus restricting the entry of unknown persons.
- Small knob function to provide Latch bolt locking function in Open / Close conditions.
- Reversible Latch Bolt makes lock suitable for both inside & outside opening doors.
- Cylinder with Precision brass lever locking mechanism.
- Rust-resistance Coated finish.
- Dimple key technology cylinder provide extra security with over 1 million combination.
- 2 lacs life cycle tested.
- Suitable for 30mm – 85mm thick doors

Tri Bolt Dead Lock >



Specifications

Body / Receptacle / Striker Plate : CRCA. MS. Sheet

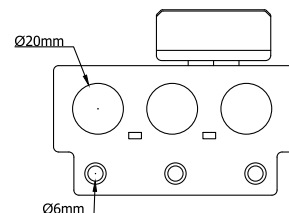
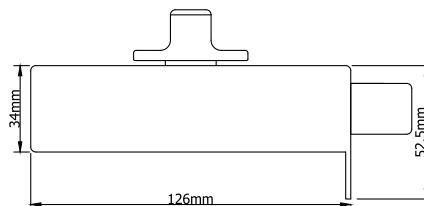
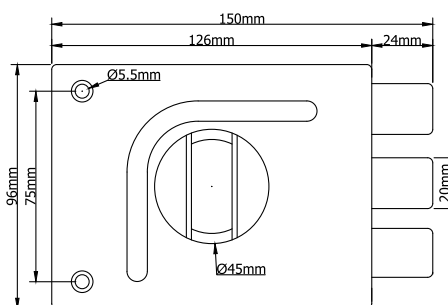
3 Dead bolt Round : Mild Steel

Big Knob : Zinc

Finish

SPC – Silver Paint Coated .

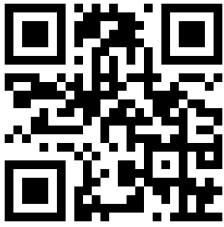
AB – Antique Brass.



Features

- Operated by Key from outside and knob / key from inside.
- Double stroke Deadbolt with 11mm stroke each – total 22mm.
- Cylinder with Precision brass lever locking mechanism.
- Rust-resistance Coated finish.
- Dimple key technology cylinder provide extra security with over 1 million combination.
- 2 lacs life cycle tested.
- Suitable for 30mm – 85mm thick doors.

[illegible]



Steel Paradise (India) Pvt. Ltd.

Corp. Office : C-93, Sec-3, DSIDC,
Bawana Indl. Estate, Delhi-110 039
T. 97182 93000 | E. info@akssteel.com
www.akssteel.com

